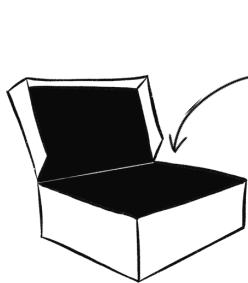
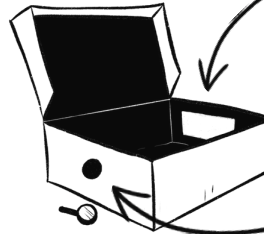


Create a Camera Obscura with a Shoebox



1.

Paint the inside of a shoebox black, or you can line it with black cardboard or black adhesive tape.

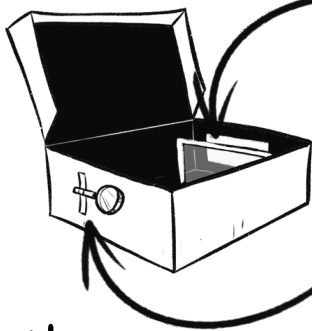


2.

In the back (centered), cut out a window about 6 cm x 10 cm.

In the front (centered), make a hole the size of the magnifying glass.

3.



Place a frame with tracing paper or vellum.

Attach the magnifying glass with black adhesive tape to prevent light from entering. You can also use glue or modeling clay.

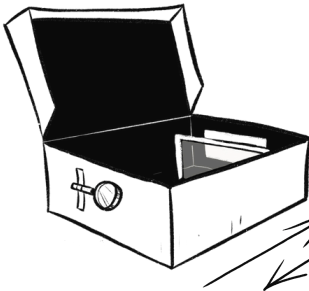


A foam board or cardboard frame the same size as the box.

Glue

Tracing paper or vellum

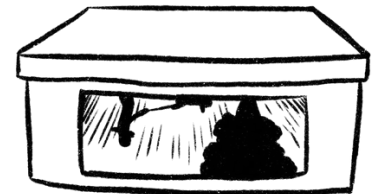
4.



To focus the image, move the frame back and forth until you find the sharpest point.

5.

Look through the back window, and you'll see the reflected image live. You can photograph it and share it on Instagram using the hashtag: #andanafotomiluz



What you need:

- A shoebox.
- Black paint or cardboard.
- A magnifying glass.
- Foam board.
- Tracing paper or vellum.
- Black adhesive tape.
- Glue stick.
- A cutter.

DA

andanafoto.com

Activity by Javier Sancho Boils from the book "Photography to Get To Know Yourself. Origin".

IMPORTANT: Some chemicals may be toxic or corrosive. Follow all the protection and safety measures recommended by the manufacturer of any tools, products, or chemicals you use.

Illustrations by Javier Alfonso. © All rights reserved.